

ROAD CLOSURE AND SPECIAL EVENT CLEARWAY INFORMATION

Dear residents and business owners, City2Surf is back and better than ever on Sunday, August 14. Up to 70,000 people will take on the spectacular 14km course from Hyde Park in the Sydney CBD to the iconic Bondi Beach to help raise over \$5million for charity.

CHANGED ACCESS

The northbound lanes of Park Parade will be closed from Birrell St to Bondi Rd from 1am – 4pm on Sunday 14 August.

This means from 1am until 4pm vehicle access to Park Parade will be via Bondi Road only – no access via Birrell St. Refer to the map on the reverse of this letter.

A designated towing area storing relocated vehicles towed from special event clearways will operate in the northbound lanes.

There will be a number of tow trucks making frequent drop offs so residents should expect an increase in noise and the number of parked vehicles on event day. We apologise for any inconvenience caused.

PARKING ARRANGEMENTS & RESTRICTIONS

Existing street parking will not be affected, and you may continue to park your vehicles on the eastern side of Park Parade. The towing operations will be taking place in the existing no-stopping zones along the western side of Park Parade.

Special event clearway parking restrictions will be in effect near you along Bondi Rd to accommodate the increased number of buses operating on event day. Traffic will be heavy so avoid unnecessary travel where possible.

Clearways will be in effect from 1am to 4pm on both sides of Bondi Rd between Oxford St and Bondi Junction, and Campbell Pde at Bondi Beach.

SPECIAL EVENT CLEARWAYS

Special event clearways are **strict no parking zones for all vehicle types**. These clearways apply even to local residents and TfNSW Mobility Scheme Permit holders.



Check signs carefully on the day and the night before as vehicles left in signposted clearways will be towed and a fee applies. If your vehicle is towed, call **132 701** to find its new location.

EVENT ROAD CLOSURES NEAR YOU

Roads on the southern end of Bondi Beach including sections of Campbell Pde, Bondi Rd, Lamrock Ave and Sandridge St will be closed from 7am. The northern end of Campbell Pde will be closed from Hall St to Blair St from 6am. Roads will reopen by 4pm.

Closures will also be in place on the remainder of the course in the city between 3:30am and 12pm and from Double Bay to Dover Heights between 7am and 2pm.



For residents located between the course and the coastline, we advise you to park your car on the other side of the road the night before if you require to drive anywhere while the road is closed.

FIND OUT MORE

Visit livetraffic.com for detailed closure & clearway information and real-time traffic updates on the day.

Visit transportnsw.info for details on bus diversions and other public transport information.

Visit city2surf.com.au for event information including course maps, start times and how to enter. Please note noise levels will be higher than normal in areas along the event route.

For all event enquiries or concerns, contact the **event information line on 1300 761 384**.

Enter now at
city2surf.com.au

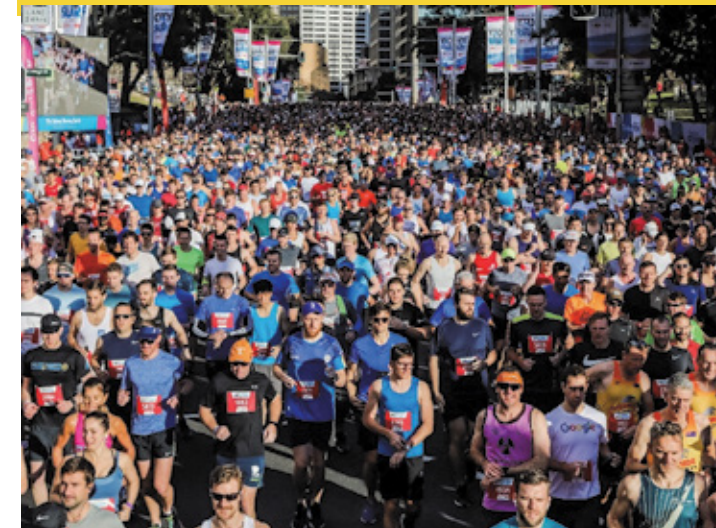


SUNDAY, 14 AUGUST 2022

ROAD CLOSURE AND SPECIAL EVENT CLEARWAY INFORMATION

Park Parade, Bondi Junction

Changed local access and Special event clearways from 1am. Refer to map inside.





North

Road Closures

- █ 1am - 4pm
- █ 6am - 4pm
- █ 7am - 2pm
- █ 7am - 4pm
- █ 9:30am - 3pm
- █ Restricted Access 1am - 1pm
Sat 13 Aug 2022
Road Closed 1pm Sat 13 Aug - 4pm
Sun 14 Aug 2022

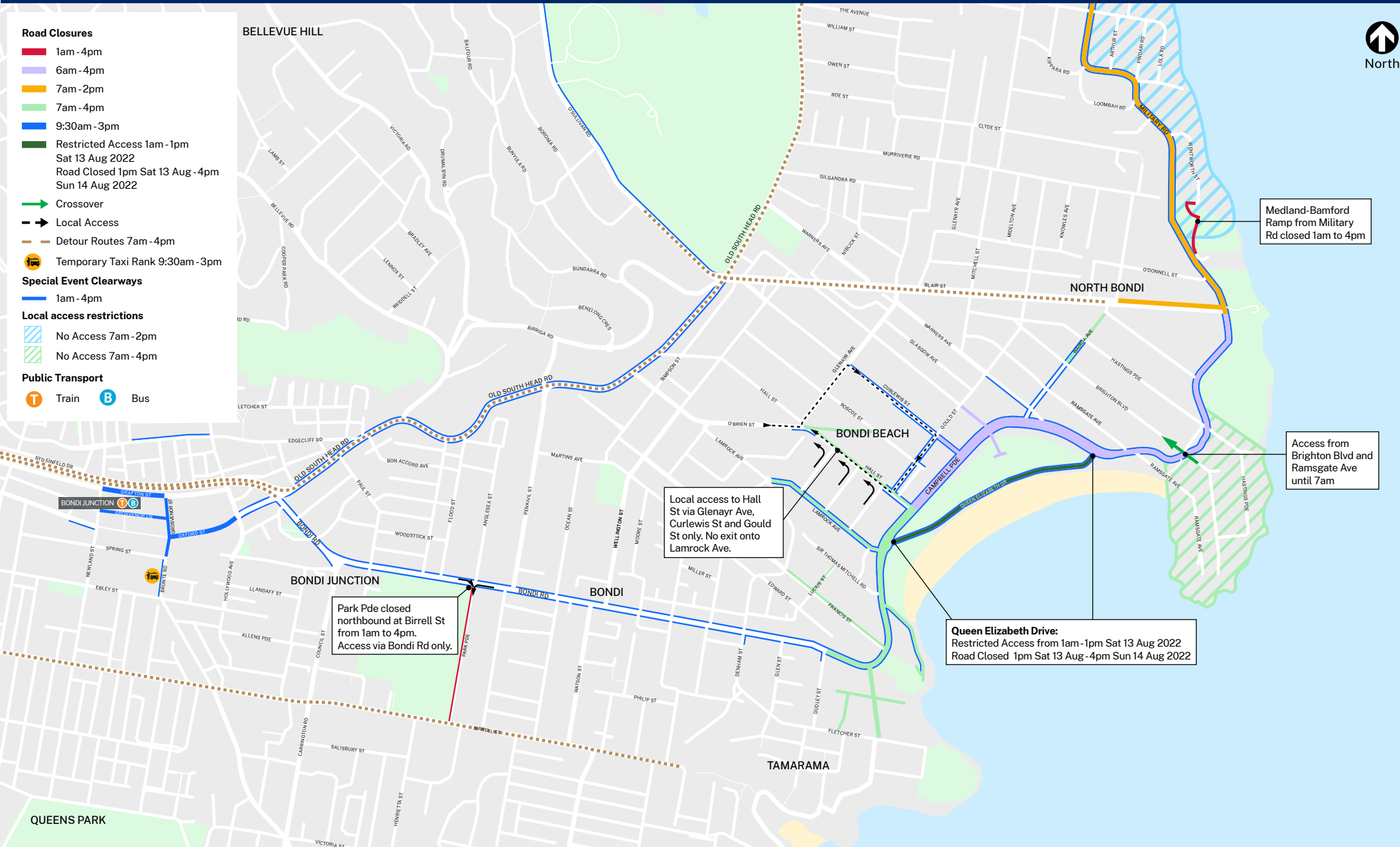
- Crossover
- Local Access
- Detour Routes 7am - 4pm
- Temporary Taxi Rank 9:30am - 3pm

Special Event Clearways

- █ 1am - 4pm
- No Access 7am - 2pm
- No Access 7am - 4pm

Public Transport

- Train
- Bus



Park Pde closed northbound at Birrell St from 1am to 4pm. Access via Bondi Rd only.

Local access to Hall St via Glenayr Ave, Curlew St and Gould St only. No exit onto Lamrock Ave.

Queen Elizabeth Drive:
Restricted Access from 1am - 1pm Sat 13 Aug 2022
Road Closed 1pm Sat 13 Aug - 4pm Sun 14 Aug 2022

Medland-Bamford Ramp from Military Rd closed 1am to 4pm

Access from Brighton Blvd and Ramsgate Ave until 7am

