

ROAD CLOSURE AND SPECIAL EVENT CLEARWAY INFORMATION

Dear residents and business owners, City2Surf is back and better than ever on Sunday, August 13. Up to 80,000 people will take on the spectacular 14km course from Hyde Park in the Sydney CBD to the iconic Bondi Beach to help raise over \$3.5million for charity.

ROAD CLOSURES

- **Sydney CBD between 3:30am and 12pm:** sections of College St, Park St and Macquarie St.
- **Woolloomooloo to Edgecliff from 6am to 12pm:** William St through to New South Head Rd at Ocean Ave. No access to the city via New South Head Rd west of Ocean St until 12pm, detour via Oxford St.
- **Double Bay to Bondi between 7am and 2pm:** New South Head Rd, Old South Head Rd and Military Rd.
- **Bondi Beach between 6am and 4pm:** Campbell Pde from Hall St to Blair St including Lamrock Ave from 6am. Campbell Pde from Dudley St to Hall St. Roads at Bondi Junction will close from 9am to 3:30pm.

Please familiarise yourself with the road closure locations and times in advance. If you need to access your vehicle on event day, ensure it's parked outside of the event course. It is a finable offence to drive on, or exit a driveway onto a closed road.

LOCAL ACCESS & COURSE CROSS OVER POINTS

Access for residents to cross the course will be maintained at the following locations, once the course is locked down there will be no access until roads reopen. Please plan your movements ahead of time.

- **North Bondi:** Brighton Blvd and Ramsgate Ave one-way exit only until 7am. No entry after 6am.
- **Bondi Rd** will be heavily congested with hundreds of buses transporting thousands of participants between the beach and the junction. **Local residents are urged to avoid unnecessary travel on Bondi Rd.**
- Residents north of Bondi Rd should use Old South Head Rd to enter or exit the area. Residents south of Bondi Rd should use Birrell St.
- Local access for residents at Bondi Beach will be maintained via Curlewis, Gould and Hall Streets – no exit onto Lamrock Ave.

SPECIAL EVENT CLEARWAYS

Special event clearways are **strict no parking zones for all vehicle types** and will be in effect on both sides of the entire 14km course. These clearways apply even to local residents and TfNSW Mobility Scheme Permit holders.

- **Rose Bay to Bondi from 1am to 4pm:** New South Head Rd, Military Rd, Campbell Pde, Old South Head Rd and local streets at Bondi Beach including Hall St, Lamrock Ave, Curlewis St and other nearby roads.
- Clearways will also be in effect on O'Sullivan Rd from Latimer Rd to New South Head Rd and a section of Warners Ave from 4pm Saturday 12 August to 4pm Sunday 13 August.

Check signs carefully on the day and the night before as vehicles left in signposted clearways **will be towed** and a fee applies. If your vehicle is towed, call **132 701** to find its new location.



For residents located between the course and the coastline, we advise you to park your car on the other side of the road the night before if you require to drive anywhere while the road is closed.

FIND OUT MORE

Visit livetraffic.com for detailed closure & clearway information and real-time traffic updates on the day.

Visit transportnsw.info for details on bus diversions and other public transport information.

Visit city2surf.com.au for event information including course maps, start times and how to enter. Please note noise levels will be higher than normal in areas along the event route.

For all event enquiries or concerns, contact the **event information line on 1300 761 384**.

enter now at
city2surf.com.au



SUNDAY, 13 AUGUST 2023

ROAD CLOSURE AND SPECIAL EVENT CLEARWAY INFORMATION

Dover Heights, North Bondi and Bondi

Road closures from 6am and special event clearways from 1am. Refer to map inside.





City2Surf - Sunday 13 August 2023

Dover Heights to Bondi Junction - Road Closures & Special Event Clearways

Road Closures

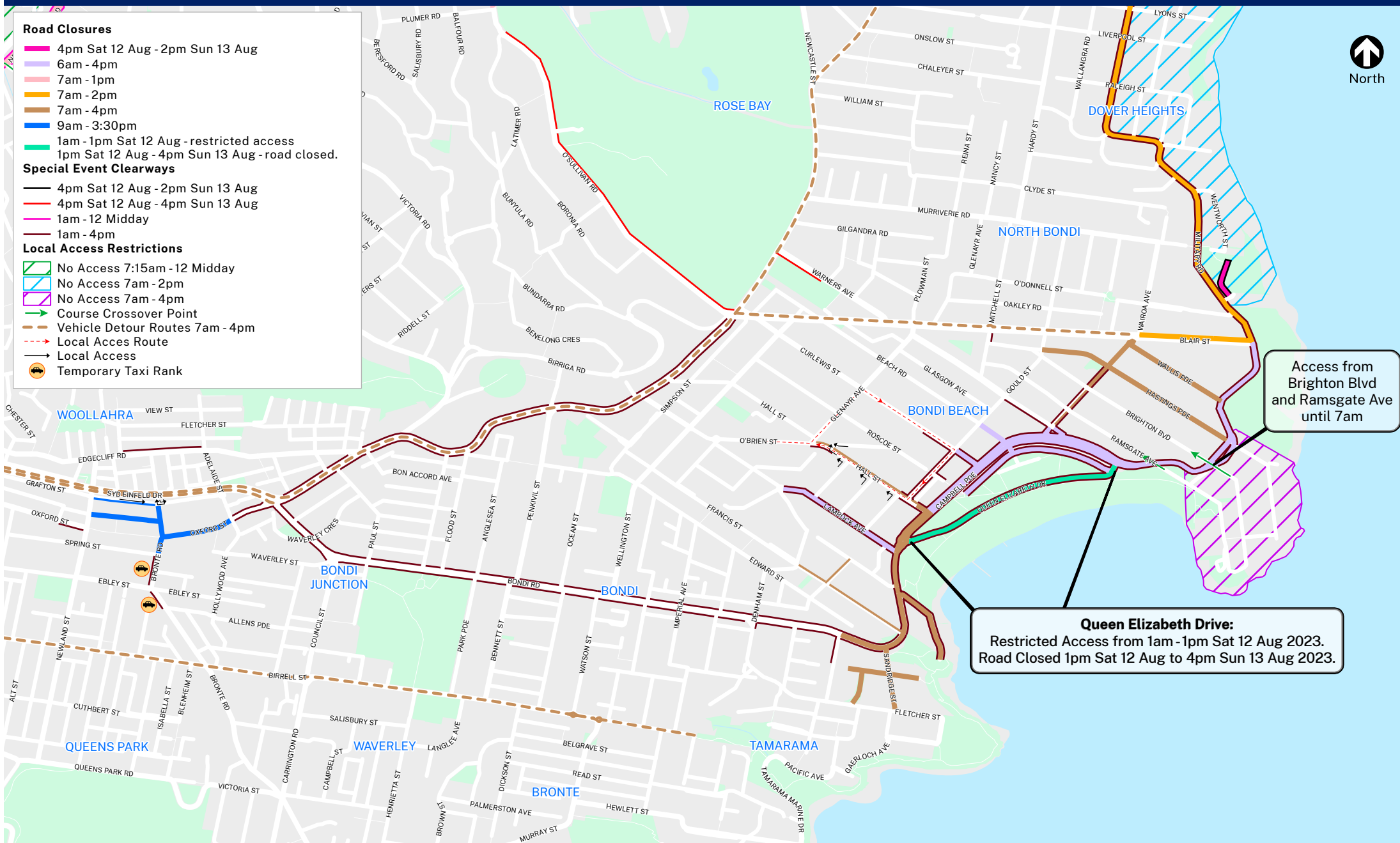
- 4pm Sat 12 Aug - 2pm Sun 13 Aug
- 6am - 4pm
- 7am - 1pm
- 7am - 2pm
- 7am - 4pm
- 9am - 3:30pm
- 1am - 1pm Sat 12 Aug - restricted access
- 1pm Sat 12 Aug - 4pm Sun 13 Aug - road closed.

Special Event Clearways

- 4pm Sat 12 Aug - 2pm Sun 13 Aug
- 4pm Sat 12 Aug - 4pm Sun 13 Aug
- 1am - 12 Midday
- 1am - 4pm

Local Access Restrictions

- ▭ No Access 7:15am - 12 Midday
- ▭ No Access 7am - 2pm
- ▭ No Access 7am - 4pm
- Course Crossover Point
- - - Vehicle Detour Routes 7am - 4pm
- - - Local Access Route
- Local Access
- Temporary Taxi Rank



Access from Brighton Blvd and Ramsgate Ave until 7am

Queen Elizabeth Drive:
 Restricted Access from 1am - 1pm Sat 12 Aug 2023.
 Road Closed 1pm Sat 12 Aug to 4pm Sun 13 Aug 2023.

