



## **PARKING RESTRICTIONS**

### **LAMROCK AVENUE, BONDI CITY 2 SURF, SUNDAY 13 AUGUST 2023**

Dear Lamrock Avenue residents,

City2Surf is taking place on Sunday 13 August. Over 80,000 people will take on the spectacular 14km course from Hyde Park in the Sydney CBD to Bondi Beach to help raise over \$3.5million for charity.

Road closures and parking restrictions will be in effect on your street to accommodate the increased number of buses operating on event day. **Please familiarise yourself with the below information ahead of event day to avoid your car being towed.**

#### **PARKING ARRANGEMENTS & RESTRICTIONS – SUNDAY 13 AUGUST**

**Special event clearways will be in place on both sides of Lamrock Avenue between Sir Thomas Mitchell Road roundabout and Campbell Parade from 1am to 4pm.**

Special event clearways parking restrictions are strict no parking zones and apply even to local residents or RMS Mobility Scheme Parking Permit holders.

Check signs carefully as vehicles left in signposted clearways will be towed and a fee applies. If your vehicle is towed, call **132 701** to find its new location



Residents are also reminded that it is illegal to park on a footpath. Vehicles parked across footpaths force pedestrians to walk on the road and will cause safety disruptions on the day of the event. Shuttle buses will be operating through Lamrock Avenue throughout the day and pedestrians will need the ability to remain on footpaths for their safety.

#### **ROAD CLOSURE - SUNDAY 13 AUGUST**

**Lamrock Avenue will be closed between Sir Thomas Mitchell Road roundabout and Campbell Parade from 6am to 4pm**

Residents wishing to exit during this time are advised to park their vehicle away from this closure the night before the event.

Thank you for your assistance.

#### **FIND OUT MORE**

We strongly encourage you to familiarise yourself with the road closure and clearway locations and timings before parking your car or before heading out for the day.

**Refer to the map on the reverse of this letter or visit [livetraffic.com](http://livetraffic.com) for detailed info.**

For event enquiries or concerns, contact the **City2Surf Event Information Line** on **1800 555 514**.

For event information, visit [city2surf.com.au](http://city2surf.com.au).

Buses will be diverting while roads are closed, visit [transportnsw.info](http://transportnsw.info) for details.



# City2Surf - Sunday 13 August 2023

## Dover Heights to Bondi Junction - Road Closures & Special Event Clearways

### Road Closures

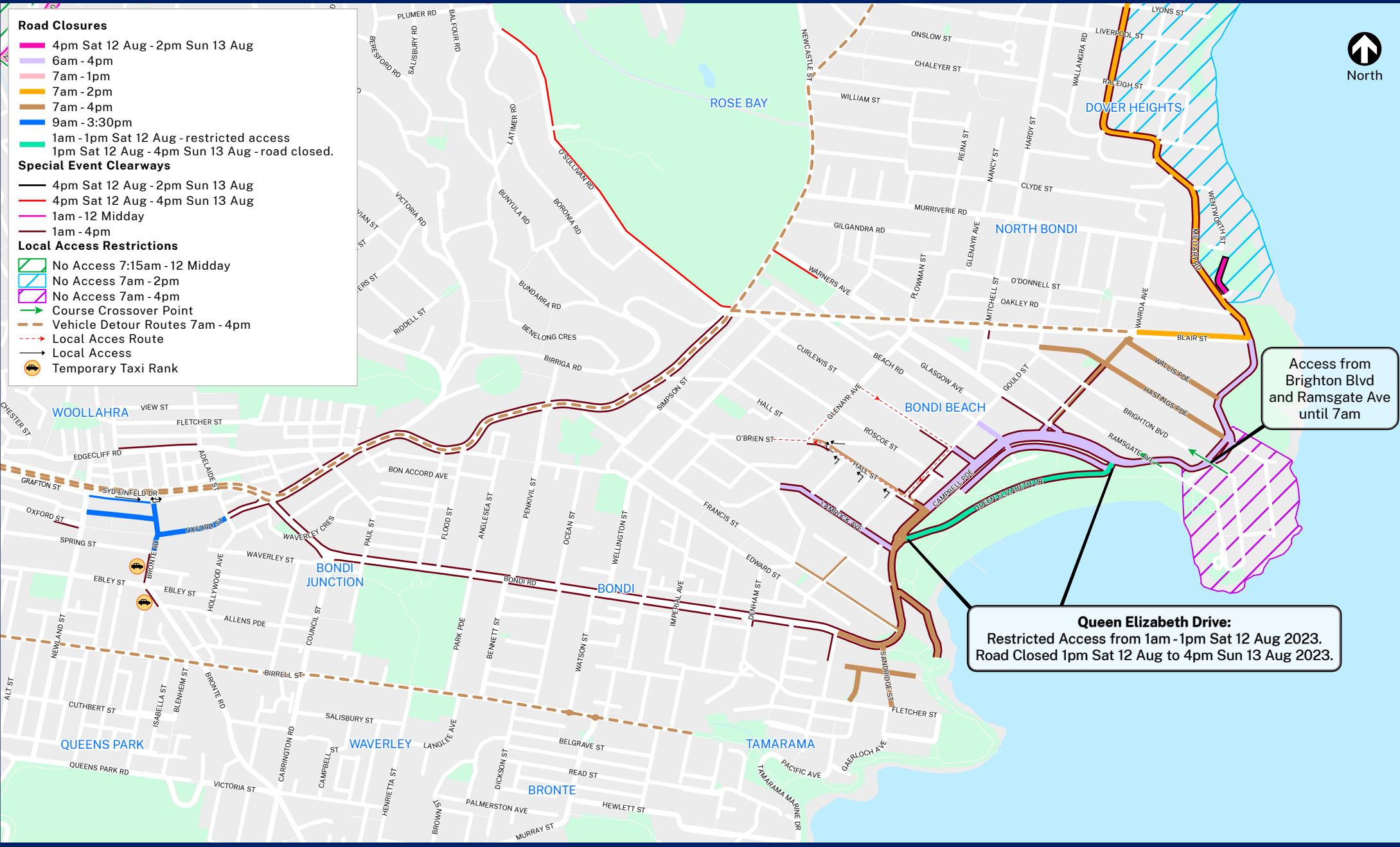
- █ 4pm Sat 12 Aug - 2pm Sun 13 Aug
- █ 6am - 4pm
- █ 7am - 1pm
- █ 7am - 2pm
- █ 7am - 4pm
- █ 9am - 3:30pm
- █ 1am - 1pm Sat 12 Aug - restricted access
- █ 1pm Sat 12 Aug - 4pm Sun 13 Aug - road closed.

### Special Event Clearways

- 4pm Sat 12 Aug - 2pm Sun 13 Aug
- 4pm Sat 12 Aug - 4pm Sun 13 Aug
- 1am - 12 Middy
- 1am - 4pm

### Local Access Restrictions

- ▨ No Access 7:15am - 12 Middy
- ▨ No Access 7am - 2pm
- ▨ No Access 7am - 4pm
- Course Crossover Point
- - - Vehicle Detour Routes 7am - 4pm
- - - Local Access Route
- Local Access
- Temporary Taxi Rank



Access from Brighton Blvd and Ramsgate Ave until 7am

**Queen Elizabeth Drive:**  
 Restricted Access from 1am - 1pm Sat 12 Aug 2023.  
 Road Closed 1pm Sat 12 Aug to 4pm Sun 13 Aug 2023.

